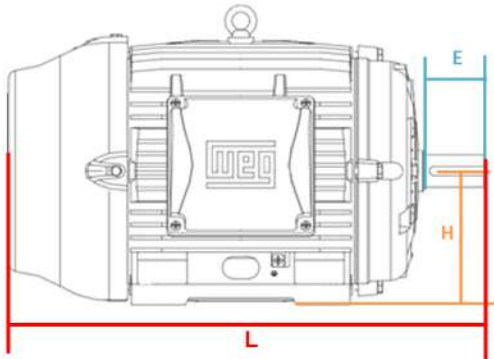
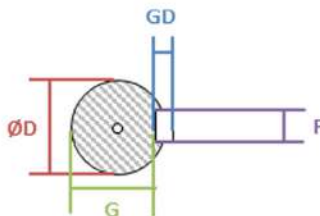


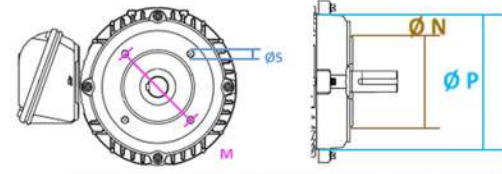
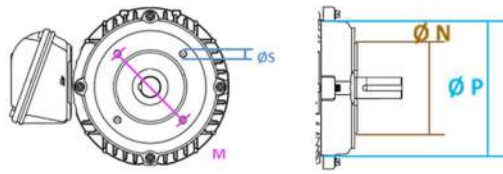
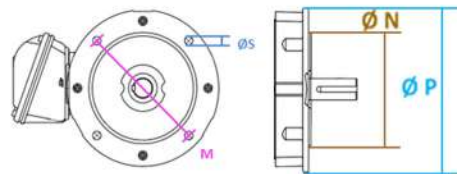
Motores blindados



Ponta do eixo



Caraça W22	H (mm)	L (mm)	E (mm)	F (mm)	G (mm)	Ø D (mm)	GD (mm)	Rolamento Dianteiro	Rolamento Traseiro
63	63	216	23	4	8,5	11j6	4	6201 ZZ	6201 ZZ
71	71	250	30	5	11,0	14j6	5	6202 ZZ	6202 ZZ
80	80	277	40	6	15,5	19j6	6	6204 ZZ	6203 ZZ
L80	80	325	40	6	15,5	19j6	6	6204 ZZ	6203 ZZ
90S	90	305	50	8	20,0	24j6	7	6205 ZZ	6204 ZZ
L90S	90	335	50	8	20,0	24j6	7	6205 ZZ	6204 ZZ
90L	90	329	50	8	20,0	24j6	7	6205 ZZ	6204 ZZ
L90L	90	360	50	8	20,0	24j6	7	6205 ZZ	6204 ZZ
100L	100	376	60	8	24,0	28j6	7	6206 ZZ	6205 ZZ
L100L	100	420	60	8	24,0	28j6	7	6206 ZZ	6205 ZZ
112M	112	394	60	8	24,0	28j6	7	6207 ZZ	6206 ZZ
L112M	112	423	60	8	24,0	28j6	7	6207 ZZ	6206 ZZ
132S	132	452	80	10	33,0	38k6	8	6308 ZZ	6207 ZZ
132M	132	489	80	10	33,0	38k6	8	6308 ZZ	6207 ZZ
132M/L	132	515	80	10	33,0	38k6	8	6308 ZZ	6207 ZZ
160M	160	598	110	12	37,0	42k6	8	6309 C3	6209 Z-C3
160L	160	642	110	12	37,0	42k6	8	6309 C3	6209 Z-C3
180M	180	664	110	14	42,5	48k6	9	6311 C3	6211 Z-C3
180L	180	702	110	14	42,5	48k6	9	6311 C3	6211 Z-C3
200M	200	729	110	16	49,0	55m6	10	6312 C3	6212 Z-C3
200L	200	767	110	16	49,0	55m6	10	6312 C3	6212 Z-C3
225S/M 2PL	225	856	110	16	49,0	55m6	10	6314 C3	6314 C3
225S/M	225	886	140	18	53,0	60m6	11	6314 C3	6314 C3
250S/M 2PL	250	965	140	18	53,0	60m6	11	6314 C3	6314 C3
250S/M	250	965	140	18	58,0	65m6	11	6314 C3	6314 C3
280S/M 2PL	280	1071	140	18	58,0	65m6	11	6314 C3	6314 C3
280S/M	280	1071	140	20	67,5	75m6	12	6316 C3	6316 C3



Caraça W22	Flange FF	Ø S (mm)	Ø M (mm)	Ø N (mm)	Ø P (mm)
63	FF-115	10	115	95	140
71	FF-130	10	130	110	160
80	FF-165	12	165	130	200
90	FF-165	12	165	130	200
100	FF-215	15	215	180	250
112	FF-215	15	215	180	250
132	FF-265	15	265	230	300
160	FF-300	19	300	250	350
180	FF-300	19	300	250	350
200	FF-350	19	350	300	400

Caraça W22	Flange FC	Ø S (mm)	Ø M (mm)	Ø N (mm)	Ø P (mm)
63	FC-95	UNC 1/4"x20	95,2	76,2	143
71	FC-95	UNC 1/4"x20	95,2	76,2	143
80	FC-95	UNC 1/4"x20	95,2	76,2	143
90	FC-149	UNC 3/8"x16	149,2	114,3	165
100	FC-149	UNC 3/8"x16	149,2	114,3	165
112	FC-184	UNC 1/2"x13	184,2	215,9	225
132	FC-184	UNC 1/2"x13	184,2	215,9	225
160	FC-184	UNC 1/2"x13	184,2	215,9	225
180	FC-228	UNC 1/2"x13	228,6	266,7	280
200	FC-228	UNC 1/2"x13	228,6	266,7	280

Caraça W22	Flange C-DIN	Ø S (mm)	Ø M (mm)	Ø N (mm)	Ø P (mm)
63	C-90	M5	75	60	90
71	C-105	M6	85	70	105
80	C-120	M6	100	80	120
90	C-140	M8	115	95	140
100	C-160	M8	130	110	160
112	C-160	M8	130	110	160
132	C-200	M10	165	130	200



MOTOR B3D SEM FLANGE



B35D COM FALANGE FF



B34D COM FLANGE C OU DIN