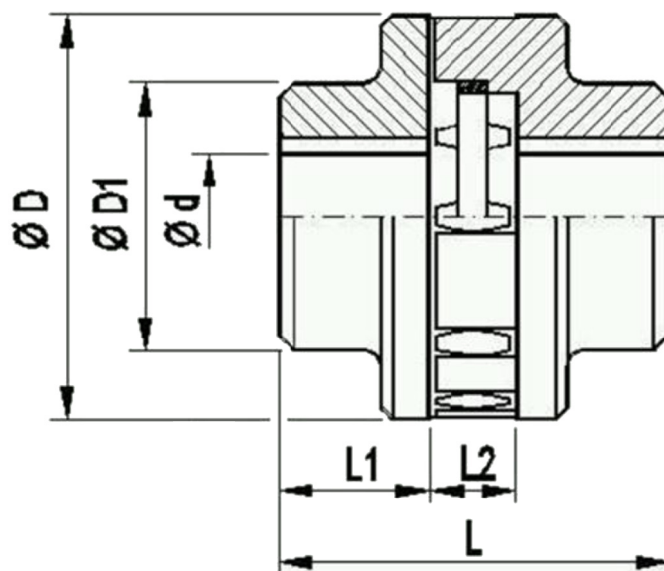


# ACOPLAMENTOS – MB



TIPO	TORQUE (kgf•m)	RPM MÁX.	D (mm)	D1 (mm)	FURO MÁX. (mm)	L (mm)	L1 (mm)	L2 (mm)
MB 28	6,5	10300	62,0	54,0	35	76,0	28,0	17,0
MB 32	10,0	9200	70,0	60,0	40	86,0	32,0	20,5
MB 38	20,0	7600	84,0	70,0	45	100,0	38,5	22,0
MB 42	27,0	7100	92,0	75,0	50	110,0	42,0	24,0
MB 48	38,5	6200	105,0	84,0	56	124,0	48,0	26,0
MB 55	51,5	5400	120,0	98,0	65	140,0	55,0	26,0
MB 60	66,5	4900	130,5	105,0	70	152,0	60,0	30,0
MB 65	91,0	4500	142,0	112,0	75	165,0	65,0	32,7
MB 75	144,0	3900	165,0	128,0	85	190,0	75,0	40,0